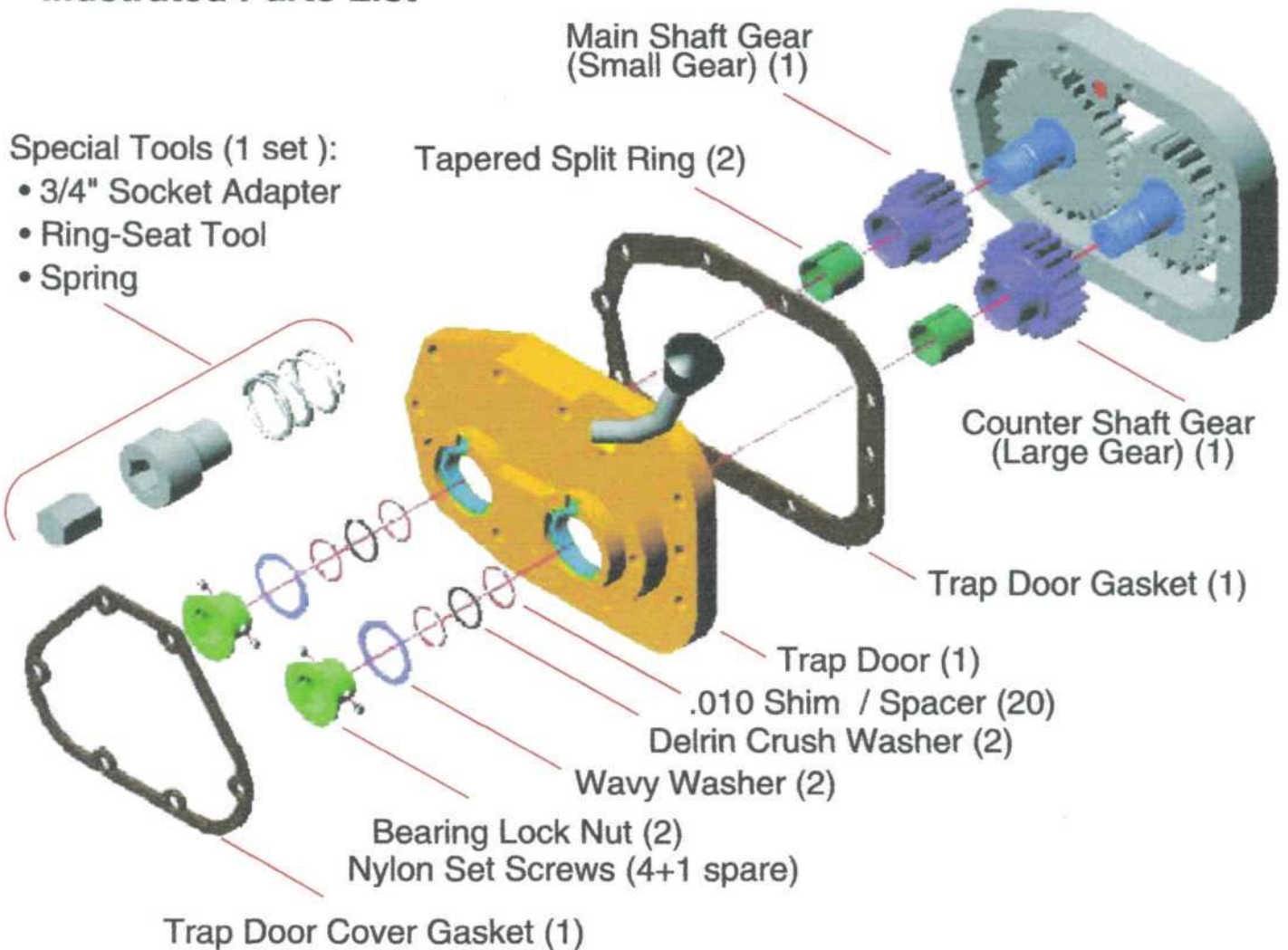


REVERSE GEAR

Installation Instructions FOR HARLEY-DAVIDSON '84 - '99 Evo/5-Speed & '99 - '04 Twin Cam Transmissions

Illustrated Parts List *



- * Not illustrated :
- : Champion Super-lock compound
 - : O-ring for clutch cable (if needed)
 - : .010" feeler gauge (3/16" wide)
 - : Scotch Brite Pad