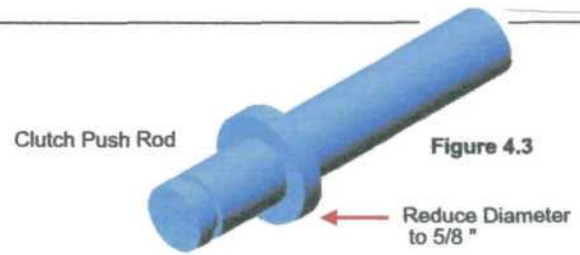


4 Modify Clutch Push Rod, Con't

Illustration shows collar to be reduced in diameter to 5/8".



5 Modify Clutch Cover

The OEM clutch cover must be modified in one area to allow clearance for new Trap Door.

- 5.1 Disassemble the clutch cover.
- 5.2 Mill or grind the area indicated in Figure 5.2. Grind depth from back to front of cover, should involve approximately half the diameter of the clutch cable hole (inset - Figure 5.2).
- 5.3 Clean any debris, reassemble and install clutch cover to transmission. Ensure proper fit of cover to transmission.
- 5.4 Adjust clutch.

WARNING! Do not refill transmission with gear oil yet. Allow 12 hours for Champion Super - Lock compound to set.

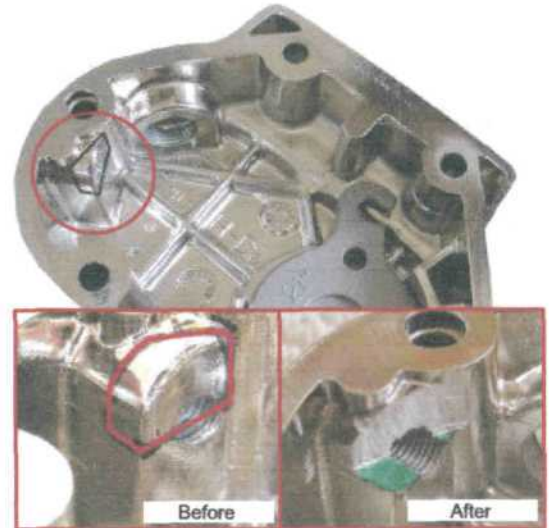


Figure 5.2

6 Special Notes

- It may be necessary to shorten the clutch release cover to transmission bolts up to 1/4".
- On some Softail models, shift handle may be obstructed. In this case, oil cooling pipes on the right side must be replaced and re-routed with braided lines. (Braided 3-hase kit, HD #63860-00)
- On some Harley-Davidson Springer, Indian & other custom models, cross-over pipe may obstruct Reverse handle. In some cases, replacement of cross-over pipe may be necessary. A specially bent handle Reverse-Gear unit is available. Notify our associate when ordering.

7 Instructions for Use

WARNING! USE IN NEUTRAL

Clutch must be engaged and transmission in neutral when shifting in and out of reverse.

To engage reverse:

- Start Motorcycle.
- Place bike in neutral.
- Engage clutch.
- Shift reverse handle in and UPWARD to select reverse.
- Feather clutch and throttle to reverse the motorcycle.

To disengage:

- Engage clutch
- Shift handle in and DOWN to de-select reverse.

WARNING! Reverse gear is intended for light duty use only. Do not drive for long periods in reverse.

WARNING! Any attempt to modify this product without written permission from the manufacturer will void the warranty and may cause damage to vehicle and injury to persons. Do not attempt to engage reverse while motorcycle is up on lift stand.

8 Warranty

One year limited warranty on reverse gear parts only.
15% restocking fee on all returned orders.